

## Peplink Premium Deck Mounts

### Features

Rugged and heavy duty mounts are intended for deck and mast installations. The cable is protected inside the mount with direct feed through the deck or mast.

This mount is made from the highest quality Marine Grade Stainless Steel to withstand harsh weather conditions and prevent corrosion at sea.

### Ordering information

Product Code	Description
ACW-650	Adapter for HD Dome series
ACW-651	1" 14 TPI female to Mobility thread
ACW-652	1" 14 TPI male adapter
ACW-653	1 1/4" 11 TPI male adapter
ACW-653A	1 1/4" 11 TPI male adapter

### Application

- Deck Installations
- Mast Installations

### Contact Us

[sales@peplink.com](mailto:sales@peplink.com)

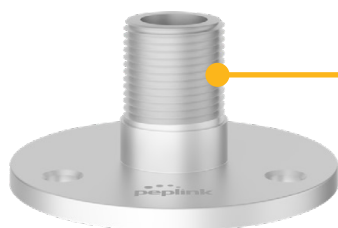
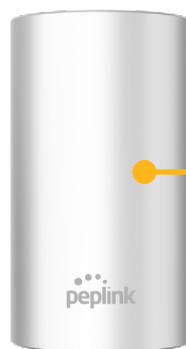
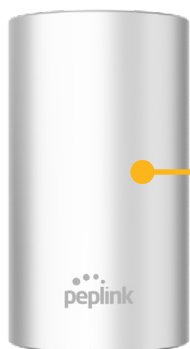
Find a Peplink Certified Partner

<https://www.peplink.com/peplink-certified-partners/>

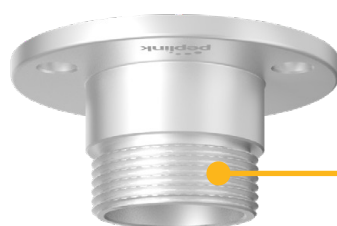


**TAA**   
COMPLIANT

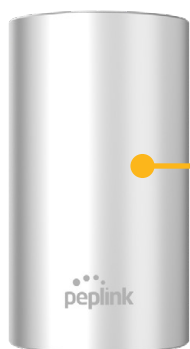
# Overview



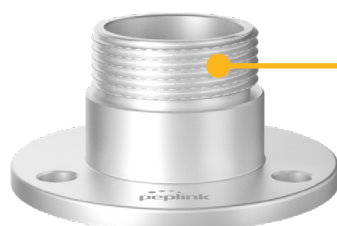
# Overview



ACW-653A



ACW-651



ACW-653A

# Overview



Compatible with MAX HD Dome series

## Order Suggestion

**For HD1 Dome, HD2 Dome, HD1 Dome Pro, HD2 Dome Pro:**

ACW-650 + ACW-651 + ACW-653

**For Dome Pro Duo:**

ACW-651 + ACW-653



Compatible with Maritime Antenna series

## Order Suggestion

ACW-652\*

\* The Deck Mount Set is included in the Maritime 40G Antenna Package.  
\* ACW-652 is not compatible with ANT-MR-20G-N-W-6.



Compatible with Mobility Antenna series

## Order Suggestion

ACW-651 + ACW-653



Compatible with Antenna MAX

## Order Suggestion

ACW-653A + ACW-651 + ACW-653A

# Overview

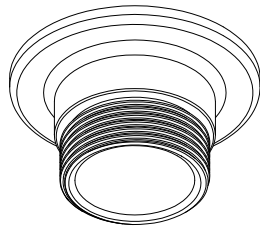
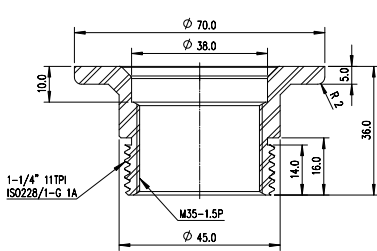
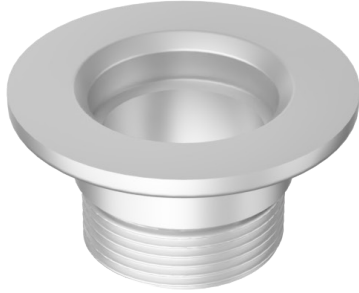


Compatible with Antenna MAX S

## Order Suggestion

ACW-653A + ACW-651 + ACW-653A

# ACW-650



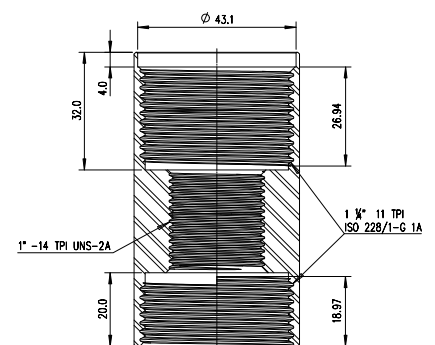
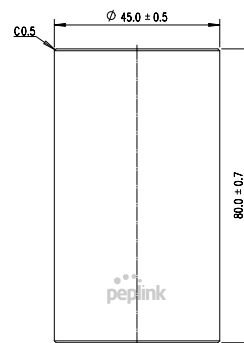
## Mechanical Specification

<b>Material</b>	Stainless Steel SS316
<b>Internal thread</b>	M35x1.5 (compliant with HD Dome)
<b>External thread</b>	1" 14 TPI (fits to ACW-651)
<b>Dimensions HxD</b>	1.42" x 2.76" (36 x 70mm)
<b>Weight</b>	220g / 0.49 pounds

## Ordering information

Product Code	Description
ACW-650	Adapter for HD Dome series

# ACW-651



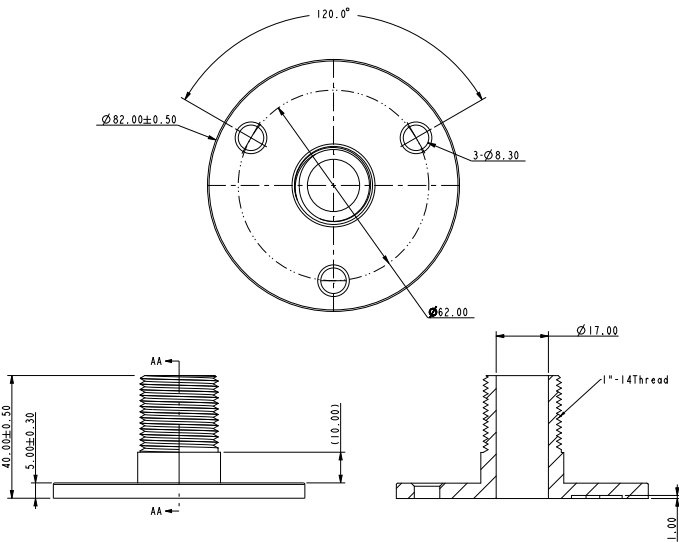
## Mechanical Specification

<b>Material</b>	Stainless Steel SS316
<b>Internal thread 1 (Top and Bottom)</b>	1 1/4" 11 TPI
<b>External thread 2 (Bottom)</b>	1" 14 TPI
<b>Dimensions HxD</b>	3.15" x 1.77" (80 x 45mm)
<b>Weight</b>	350g / 0.77 pounds

## Ordering information

Product Code	Description
ACW-651	1" 14 TPI female to Mobility thread

# ACW-652



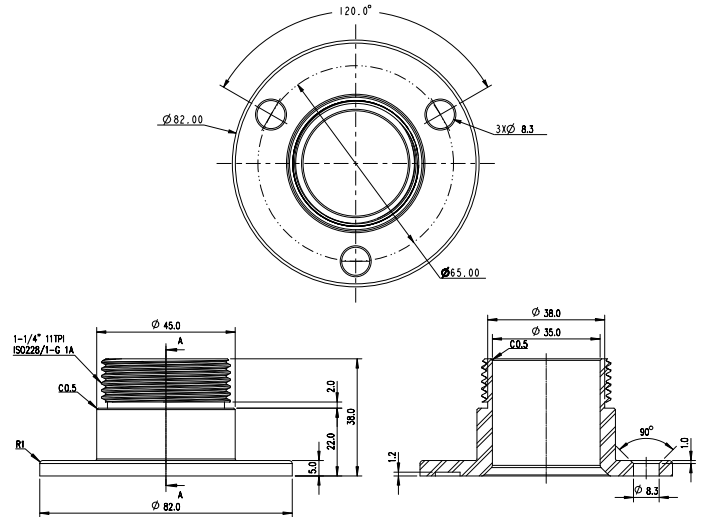
## Mechanical Specification

<b>Material</b>	Stainless Steel SS316
<b>External thread</b>	1" 14 TPI
<b>Dimensions HxD</b>	1.57" x 3.23" (40 x 82mm)
<b>Weight</b>	250g / 0.55 pounds

## Ordering information

Product Code	Description
ACW-652	1" 14 TPI male adapter

# ACW-653



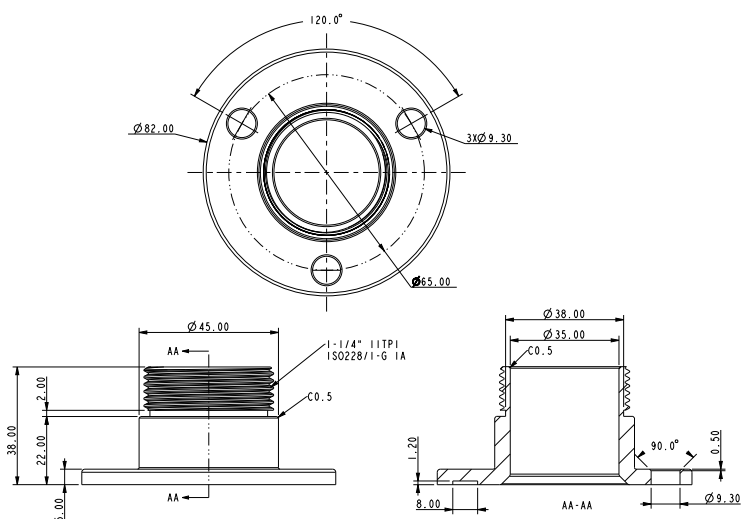
## Mechanical Specification

<b>Material</b>	Stainless Steel SS316
<b>External thread</b>	1 1/4" 11 TPI
<b>Dimensions HxD</b>	1.50" x 3.23" (38 x 82mm)
<b>Weight</b>	270g / 0.60 pounds

## Ordering information

Product Code	Description
ACW-653	1 1/4" 11 TPI male adapter

# ACW-653A



## Mechanical Specification

<b>Material</b>	Stainless Steel SS316
<b>External thread</b>	1 1/4" 11 TPI
<b>Dimensions HxD</b>	1.50" x 3.23" (38 x 82mm)
<b>Weight</b>	270g / 0.60 pounds

## Ordering information

Product Code	Description
ACW-653A	1 1/4" 11 TPI male adapter



